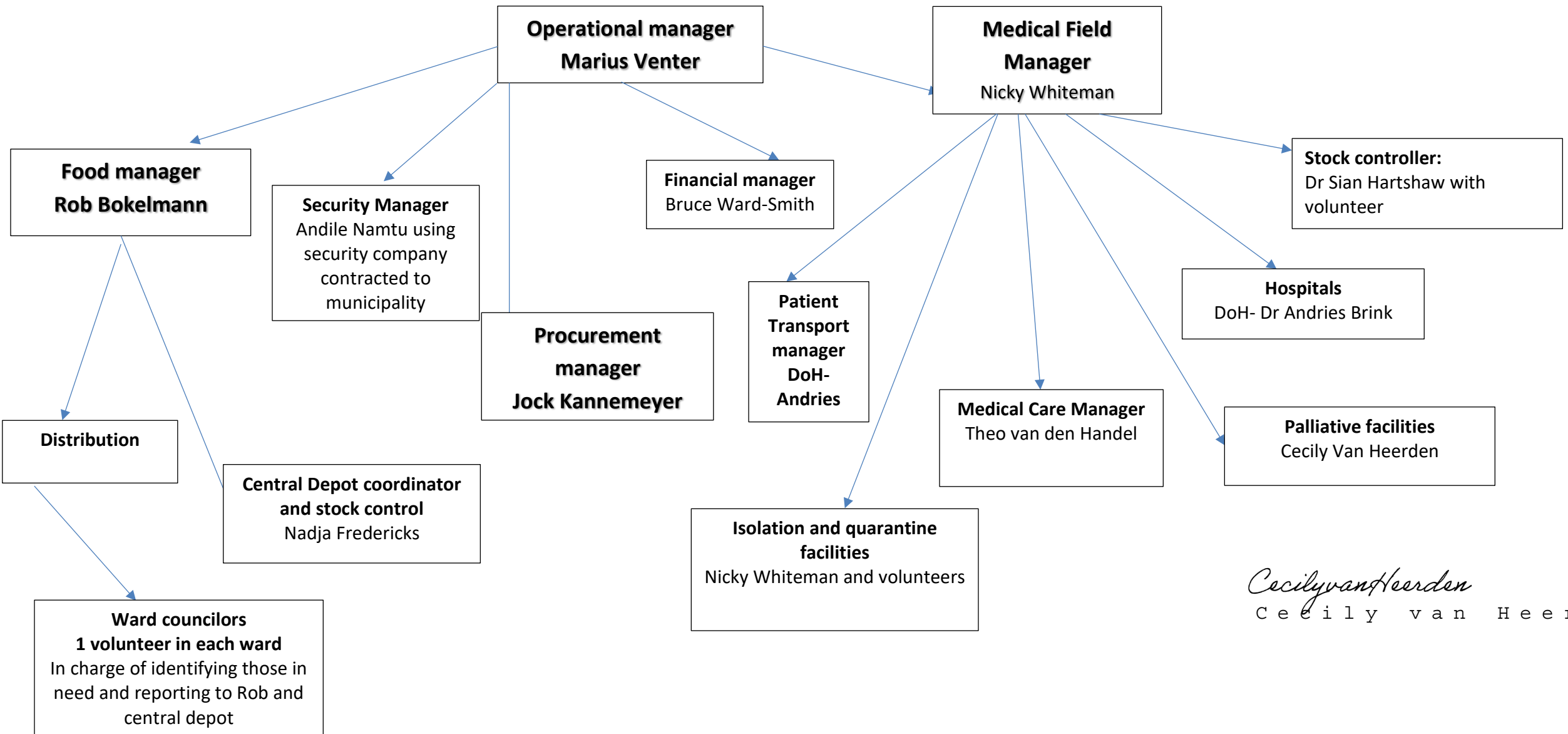


Strategy plan for Bitou Covid19 Response Team working with The PlettAid Foundation (Version 3 17/4/2020)

1. Provide medical care and supplies for critical and severe Covid19 patients (+/-1000 people)
2. Provide food to disadvantaged people within the townships of Bitou (+/- 10 000 people from now until end May)

Management structure – Bitou Covid 19 Response Team



Cecily van Heerden
C e c i l y v a n H e e r d e n