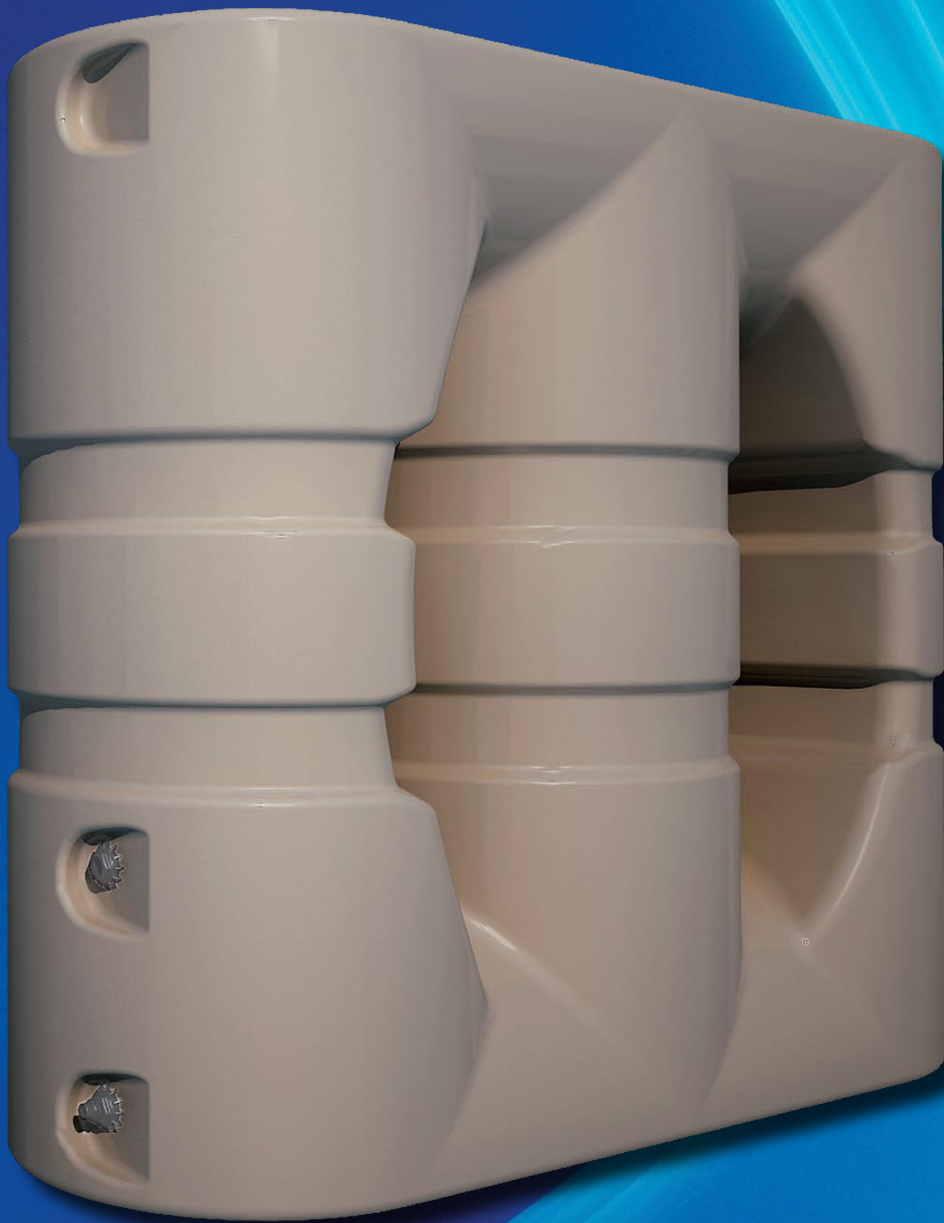


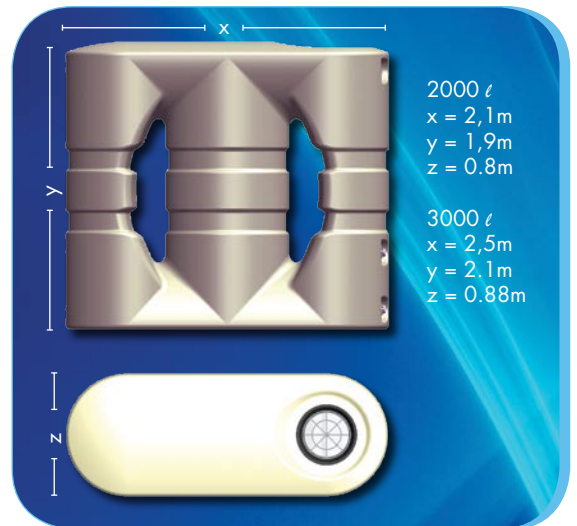
*Rainwater is a naturally pure,
clean and sustainable source of water*





RainCell™

- The revolutionary RainCell™ tank was designed primarily to harvest rainwater gathered from any roof structure.
- The narrow design of the tank is perfect for urban areas where space is a major concern. Unlike traditional round tanks, the RainCell™ tank will not block walk ways, requiring only 0.8m X 1.9m (for a 2000 Litre RainCell™ tank) of free space. The RainCell™ tank can be placed against virtually any wall of your house.
- Simply divert a gutter down pipe directly above the tank's filter screen to safely collect rainwater from your roof.
- The harvested rainwater can then be used to irrigate the garden, top up the swimming pool, wash the car, etc. Rainwater is even clean enough to be plumbed into your house with very little extra filtration required.
- Several other unique features include:
 - 4 Outlet options, allowing for any inlet/outlet configuration.
 - 450mm threaded lid with removable filter screen (conforming to international standards).
 - 70mm overflow outlet with mosquito proof stainless steel mesh.
 - Tubular shaped body for added strength, to maintain cool stored water and to ventilate the surrounding area.
 - Available in either a 2000 litre or a 3000 litre version.



About Rainwater Harvesting

- Water treatment plants are coming under increasing pressure to supply clean, safe water. As the demand increases so will the cost. By harvesting and utilising rainwater in our homes and on our gardens, we can reduce our demand for municipal water, thus reducing our monthly bill.
- Water and electricity are both critical services, however the temporary loss of water is a very serious issue for a household. By plumbing your stored rainwater into your house, you can flush toilets, wash clothes or even shower or bath.
- By harvesting and utilising rainwater we lower our demand for municipal water, reducing our dependence on dams and water treatment plants.
- Rainwater is a safe, clean source of water.
- Rainwater contains no chemicals added by water treatment plants. It is softer and naturally pure making it perfect for your garden.

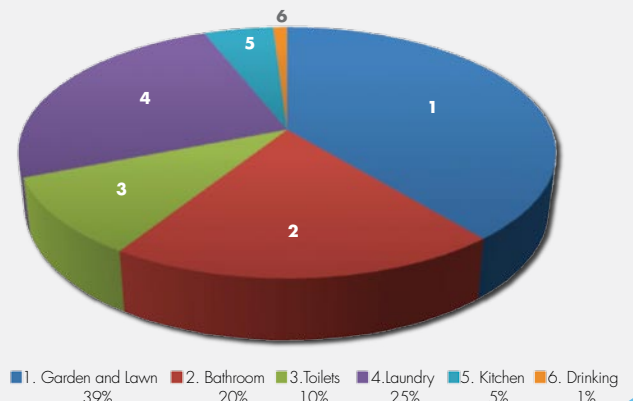
Accessories

Please visit our website for a full list of recommended accessories for your RainCell™ Tank, www.RainCell.co.za.

Distribution

Please feel free to contact us for your nearest distributor or visit our website www.RainCell.co.za, to view a full list of distributors.

Urban Water Distribution



URBAN^{RAIN}
Systems (PTY) LTD

4 Platina Crescent New Era Ext. 1, Springs, 1560
Phone: +27 11 817 3534 • Fax: +27 11 817 3702
E-mail: info@urbanrainsystems.co.za
Website: www.urbanrainsystems.co.za
GPS Coordinates: S 26° 15' 16.3" E 28° 24' 33.8"

The RainCell tank



The revolutionary RainCell™ Tank was designed primarily to harvest rainwater gathered from any roof structure.

The narrow design of the tank is perfect for urban areas where space is a major concern. Unlike traditional round tanks, the RainCell™ tank will not block walk ways, requiring only 0.8m X 1.9m (for a 2000 Litre RainCell™ tank) of free space. The RainCell™ tank can be placed against virtually any wall of your house.

Simply divert a gutter down pipe directly above the tank's filter screen to collect rainwater from your roof.

The harvested rainwater can then be used to irrigate the garden, top up the swimming pool, wash the car, etc. Rainwater is even clean enough to be plumbed into your house with very little extra filtration required.

Several other unique features include:

- 4 Outlet options, allowing for any inlet/outlet configuration.
- Stainless steel filter screen (conforming to international standards) for the filtration of rainwater from the roof.
- 70mm overflow outlet with mosquito proof stainless steel mesh.
- Tubular shaped body for added strength, to maintain cool stored water and to ventilate the surrounding area.

Available in either a 2000 litre or a 3000 litre version.

	2000lt Raincell™ Tank	3000lt Raincell™ Tank
Length	2.1 m	2.5 m
Height	1.9 m	2.1 m
Width	800 mm	880 mm
Capacity	2000 litres	3000 Litres

RainCell Planter tank



The RainCell Planter tank is ideal for home use. Its size, shape and colour options make it an inconspicuous way of storing rain water collected from your gutters for irrigation.

Benefits and features include:

- Its slim design makes it perfect to use below window sill height.
- The planter basin on top of the tanks can be used for herbs, vegetable or flowers.
- The planter basin drainage system will allow excess water to be drained from the planter basin, preventing any rotting of roots. The excess water is not drained into the tank.
- Also available in an 1100lt flat top version.

Technical details:

- 2 x 1" (inch) outlet options, allowing for a pump and a garden tap to be connected to the tank.
- Stainless steel filter screen (conforming to international standards) for the filtration of rainwater from the roof.
- 70mm overflow outlet with mosquito proof stainless steel mesh.
- A unique patented drainage system for the planter basin.
- Colour coded lid for added aesthetics.

	1200lt Raincell™ Planter Tank	1100lt Raincell™ Flat Top Tank
Length	2.3 m	2.3 m
Height	1.1 m	1.06 m
Width	750 mm	750 mm
Capacity	1200 litres	1100 Litres