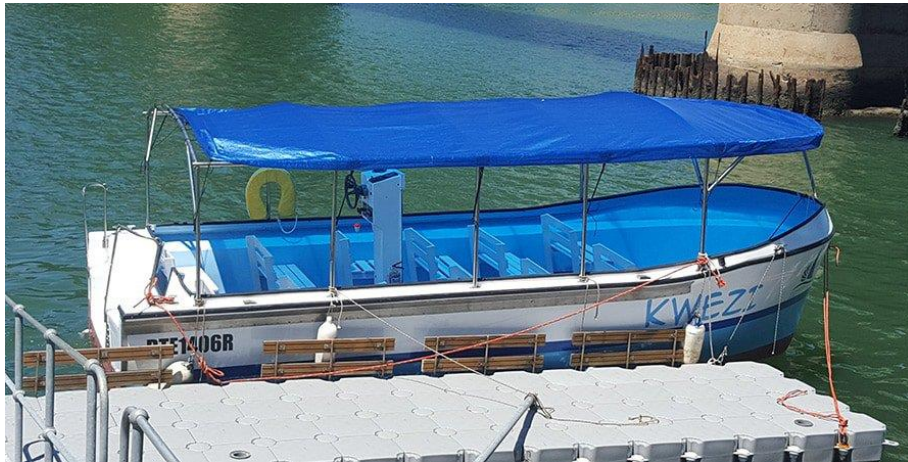


# SOUTHERN CROSS CRUISES (RIVER CRUISES)

## 2020 PRICE LIST



**KWEZI**



**THE INYATHI**



**THE SPIRIT OF EMMA**

## PRIVATE RIVER CRUISES

|   |   |
|---|---|
| <b>1. Private <i>Kwezi River Cruise</i>:</b><br><b>R2 500.00</b>              | 1 Hour<br><b>Kwezi</b><br>Maximum 20 passengers per trip<br>No Refreshments Provided (bring your own)               |
| <b>2. Private <i>Inyathi River Cruise</i>:</b><br><b>R3 500.00</b>            | 1 Hour<br><b>The Inyathi</b><br>Maximum 20 passengers per trip<br>No Refreshments Provided (bring your own)         |
| <b>3. Private <i>The Spirit of Emma River Cruise</i>:</b><br><b>R3 500.00</b> | 1 Hours<br><b>The Spirit of Emma</b><br>Maximum 20 passengers per trip<br>No Refreshments Provided (bring your own) |
| <b>TO BOOK: 073 257 2319</b>  |   |

## NON-PRIVATE RIVER CRUISES

|   |   |
|---|---|
| <b>Non-Private <i>Inyathi River Cruise</i>:</b><br><b>R250</b> per person - Adults<br><b>R125</b> per person - Children < 12 years            | 1 Hour<br><b>The Inyathi</b><br>Maximum 20, minimum 8 passengers per trip<br>No Refreshments Provided (bring your own)        |
| <b>Non-Private <i>The Spirit of Emma River Cruise</i>:</b><br><b>R200</b> per person - Adults<br><b>R100</b> per person - Children < 12 years | 1 Hour<br><b>The Spirit of Emma</b><br>Maximum 20, minimum 8 passengers per trip<br>No Refreshments Provided (bring your own) |
| <b>TO BOOK: 073 257 2319</b>  |   |

**PLEASE NOTE: Prices are subject to change without prior notice**