

Advanced Camera GPS Vehicle Tracker -

- Take photos
- Driver identification via RFID
- Voice monitoring & two way talking
- Fuel & temperature monitoring
- Glonass + GPS



Support Multiple Cameras

- Take photos by preset time interval
- Take photos automatically once alarm triggered
- IR & Waterproof cameras also available



Two Way Communication

Talk to driver or monitor what driver saying in car

Driver Identification

Manage your drivers, record each driver's driving time and place details

Driver Identification

Manage your drivers, record each driver's driving time and place details



Students & School Bus Management



Students & School Bus Management

SMS to Parents or Teacher when students get on the bus on time or get off the bus



Voice Monitoring

Listen sound around GT3000ASF secretly, listen driver conversation.



Save History Data

Save History Data

No need to worry about losing data when trackers run into GPRS blind area

RS232 Port

1 RS232 port to be connected with other equipments such as cameras, taxi meters etc



5 inputs, 4 outputs, 4 analog inputs car engine detection, door control etc.



Multiple I/O

5 inputs, 4 outputs, 4 analog inputs car engine detection, door control etc.



Anti Theft

Protect your vehicles from being stolen with various alarms
Cut engine remotely when vehicle was stolen

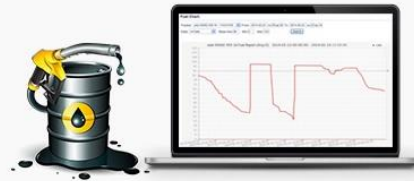
Vehicle Maintenance Alert

SMS Alert reminding you to maintain your vehicles on time



Fuel Monitoring

Fuel Savings
Anti fuel theft
Monitoring fuel consumption



Real-time Online Tracking

Locate your vehicles online at anytime anywhere

Temperature Monitoring

High temperature alarm, provide safety delivery for vegetables, fruit and cold drinks, etc.



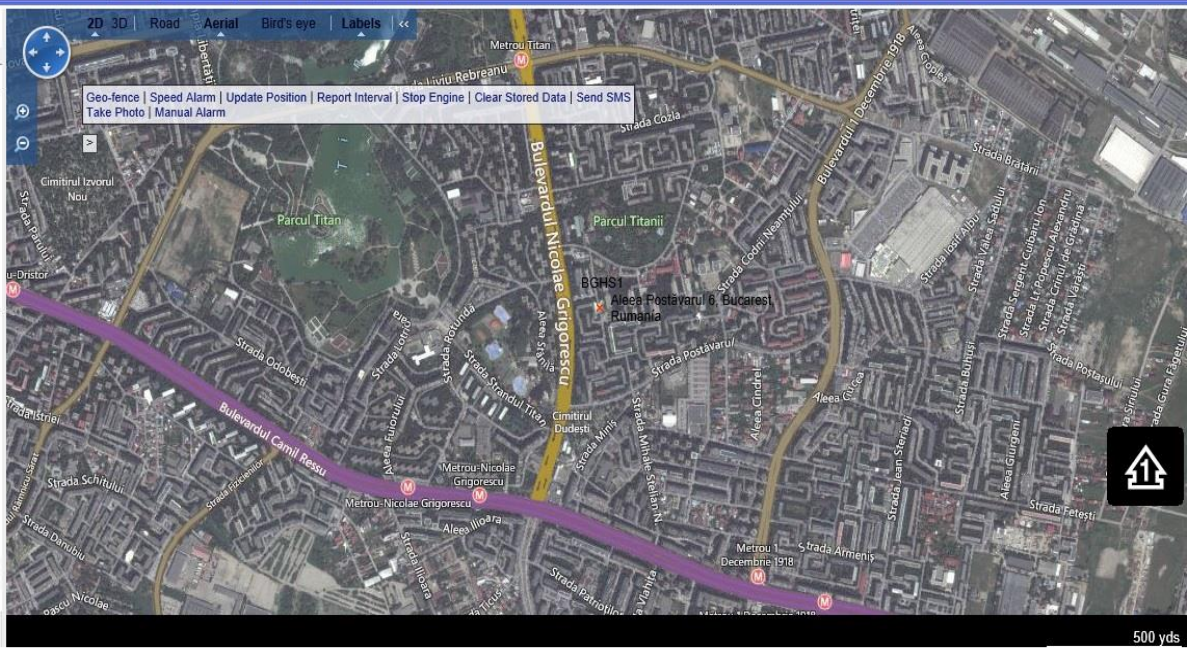
User: demoex

Total: 20 Online: 4 Signal: 4 Report

Quick Find: (Add New)

- PT201 Moto parait - 1150001
- SVP201 - 1150201
- PT600 BGHS1 - 1150666
- PT502 Ton Xn - 1150707
- Den Av - 1150909
- PT600 ISA - 1151587
- atest - 1152014
- PT100 sohail - 1152551
- PT201 PT201Hest3 - 1157123

ID: BGHS1(1150666)
 Time: 2014-8-5 12:31:0
 Lat: 44.41845 Lng: 26.1664
 Signal: GPS GSM Power
 Speed: 0.00 KM: 32.00
 State: GPS Pos
 Driver: 0
 Output:
 Input:
 AD1: 0.00%
 AD2: 0.00%
 AD3: 0.00%
 AD4: 0.00%
 Simcard Number: 0
 Address:
 Aleea Postăvaru 6, Bucurest, Rumania
 Output:
 sohail 10-05 07:53:27
 Reconnect



Features List:

1. Tracking via SMS / GPRS
2. Get Google Map link for current location by SMS request
3. Real-time online tracking in FMS platform via GPRS
4. Update position online via time interval, distance, angle, move ratio and ACC ratio
5. SOS alarm (available to preset 3 SOS number)
6. External power cut alarm and low battery alarm
7. Speed alarm, Geo-fence alarm, shake alarm
8. Stop Vehicle remotely via relay (Stop Engine)
9. Engine On/Off alarm, engine on hours report
10. Position logging capacity up to 30,000+ waypoints if no GPRS signal
11. Take photo automatically at a preset time interval
12. Take photo automatically when SOS or Geo-fence or any other alarm triggered
13. Update door open/close status, available to control open/close vehicle door by SMS or platform
14. Available to set different alarm notification ways, such as via SMS, call or email
15. Synchronous record vehicle mileage
16. Available to send mileage alarm to remind vehicle maintenance
17. Automatically stop vehicle or activate buzzer/siren when Geo-fence, speed alarm or any other alarm trigger
18. Support taking photo by extra camera (max 4pcs cameras), 6KB for each photo
19. Support voice monitoring and two way conversation via extra speaker and microphone
20. Support driver identification and students taking school bus management by extra RFID sets
21. I/O: 5 digital inputs, 3 negative and 2 positive triggering; 4 outputs. total of 9 inputs
22. Analog Input: 4*10bits resolution analog inputs
23. Harsh bracking and Acceleration